

KIMOFIX[®]
fixing system solutions

Web
www.kimofix.com

Email
info@kimofix.com

Office Add
1001-1002, Building A, AUX-Orient Center, 518Xinmei Rd, Ningbo, China

Factory Add
No.27. Zhushan Industry Zone. Yuyao City. Zhejiang Pro. CN

Dry Wall Fixings
Feel the power of KIMOFIX

KDF-DA001
Nylon Drywall Anchors

Applications:

The Nylon Drywall Anchors is a self-drilling, light duty anchor for plasterboard. It offers fast and easy installation and can also be removed quickly when required. Accomodates screws of many lengths.



Features:

- Effective drill point for easy installation and penetration of plasterboard
- Coarse thread profile to cut and grip plasterboard
- Flat-low profile head allows for flush fixing

Anchor Size(mm)
13X41

KDF-DA002
Nylon Drywall Anchors

Applications:

The Nylon Drywall Anchors is a self-drilling, light duty anchor for plasterboard. It offers fast and easy installation and can also be removed quickly when required. Accomodates screws of many lengths.



Features:

- Effective drill point for easy installation and penetration of plasterboard
- Coarse thread profile to cut and grip plasterboard
- Flat-low profile head allows for flush fixing

Anchor Size(mm)
14X32
14X42

KDF-DA003
Nylon Drywall Anchors

Applications:

The Nylon Drywall Anchors is a self-drilling, light duty anchor for plasterboard. It offers fast and easy installation and can also be removed quickly when required. Accomodates screws of many lengths.



Features:

- Effective drill point for easy installation and penetration of plasterboard
- Coarse thread profile to cut and grip plasterboard
- Flat-low profile head allows for flush fixing

Anchor Size(mm)
14X32
14X42

KDF-DA004
Nylon Drywall Anchors

Applications:

The Nylon Drywall Anchors is a self-drilling, light duty anchor for plasterboard. It offers fast and easy installation and can also be removed quickly when required. Accomodates screws of many lengths.



Features:

- Effective drill point for easy installation and penetration of plasterboard
- Coarse thread profile to cut and grip plasterboard
- Flat-low profile head allows for flush fixing

Anchor Size(mm)
14X32

KDF-DA005
Nylon Drywall Anchors

Applications:

The Nylon Drywall Anchors is a self-drilling, light duty anchor for plasterboard. It offers fast and easy installation and can also be removed quickly when required. Accomodates screws of many lengths.



Features:

- Effective drill point for easy installation and penetration of plasterboard
- Coarse thread profile to cut and grip plasterboard
- Flat-low profile head allows for flush fixing

Anchor Size(mm)

15X33

KDF-DA006
Nylon Drywall Anchors

Applications:

The Nylon Drywall Anchors is a self-drilling, light duty anchor for plasterboard. It offers fast and easy installation and can also be removed quickly when required. Accomodates screws of many lengths.



Features:

- Effective drill point for easy installation and penetration of plasterboard
- Coarse thread profile to cut and grip plasterboard
- Flat-low profile head allows for flush fixing

Anchor Size(mm)

13X38

KDF-DA007
Nylon Drywall Anchors

Applications:

The Nylon Drywall Anchors is a self-drilling, light duty anchor for plasterboard. It offers fast and easy installation and can also be removed quickly when required. Accomodates screws of many lengths.



Features:

- Effective drill point for easy installation and penetration of plasterboard
- Coarse thread profile to cut and grip plasterboard
- Flat-low profile head allows for flush fixing

Anchor Size(mm)

9X30

KDF-DA008
Nylon Drywall Anchors

Applications:

The Nylon Drywall Anchors is a self-drilling, light duty anchor for plasterboard. It offers fast and easy installation and can also be removed quickly when required. Accomodates screws of many lengths.



Features:

- Effective drill point for easy installation and penetration of plasterboard
- Coarse thread profile to cut and grip plasterboard
- Flat-low profile head allows for flush fixing

Anchor Size(mm)

28X52

KDF-DA009
Nylon Drywall Anchors

Applications:

The Nylon Drywall Anchors is a self-drilling, light duty anchor for plasterboard. It offers fast and easy installation and can also be removed quickly when required. Accomodates screws of many lengths.



Features:

- Effective drill point for easy installation and penetration of plasterboard
- Coarse thread profile to cut and grip plasterboard
- Flat-low profile head allows for flush fixing

Anchor Size(mm)

14X37

14X42

KDF-DA010
Nylon Drywall Anchors

Applications:

The Nylon Drywall Anchors is a self-drilling, light duty anchor for plasterboard. It offers fast and easy installation and can also be removed quickly when required. Accomodates screws of many lengths.



Features:

- Effective drill point for easy installation and penetration of plasterboard
- Coarse thread profile to cut and grip plasterboard
- Flat-low profile head allows for flush fixing

Anchor Size(mm)

14X29

KDF-DA011
Nylon Drywall Anchors

Applications:

The Nylon Drywall Anchors is a self-drilling, light duty anchor for plasterboard. It offers fast and easy installation and can also be removed quickly when required. Accomodates screws of many lengths.



Features:

- Effective drill point for easy installation and penetration of plasterboard
- Coarse thread profile to cut and grip plasterboard
- Flat-low profile head allows for flush fixing

Anchor Size(mm)
12X25
15X38

KDF-DA012
Nylon Drywall Anchors

Applications:

The Nylon Drywall Anchors is a self-drilling, light duty anchor for plasterboard. It offers fast and easy installation and can also be removed quickly when required. Accomodates screws of many lengths.



Features:

- Effective drill point for easy installation and penetration of plasterboard
- Coarse thread profile to cut and grip plasterboard
- Flat-low profile head allows for flush fixing

Anchor Size(mm)
14X23

KDF-DA101
Metal Drywall Anchors

Applications:
Zinc drywall anchors are used to secure lightweight-to-medium items (e.g., small mirrors, towel bars, lightweight shelves, signage) to drywall, preventing pull-through. Their zinc material resists mild moisture, fitting bathrooms/kitchens, and works for homes, offices, or light retail—unsuitable for heavy objects or constant



Features:
Install easily in pre-drilled holes
Coarse thread profile to cut and grip plasterboard
Flat-low profile head allows for flush fixing

Anchor Size(mm)

14X42

KDF-DA102
Metal Drywall Anchors

Applications:
Zinc drywall anchors are used to secure lightweight-to-medium items (e.g., small mirrors, towel bars, lightweight shelves, signage) to drywall, preventing pull-through. Their zinc material resists mild moisture, fitting bathrooms/kitchens, and works for homes, offices, or light retail—unsuitable for heavy objects or constant



Features:
Install easily in pre-drilled holes
Coarse thread profile to cut and grip plasterboard
Flat-low profile head allows for flush fixing

Anchor Size(mm)

13X42

KDF-DA103
Metal Drywall Anchors

Applications:
Zinc drywall anchors are used to secure lightweight-to-medium items (e.g., small mirrors, towel bars, lightweight shelves, signage) to drywall, preventing pull-through. Their zinc material resists mild moisture, fitting bathrooms/kitchens, and works for homes, offices, or light retail—unsuitable for heavy objects or constant



- Features:**
- Install easily in pre-drilled holes
 - Coarse thread profile to cut and grip plasterboard
 - Flat-low profile head allows for flush fixing

Anchor Size(mm)
14X25
14X38

KDF-DA104
Metal Drywall Anchors

Applications:
Zinc drywall anchors are used to secure lightweight-to-medium items (e.g., small mirrors, towel bars, lightweight shelves, signage) to drywall, preventing pull-through. Their zinc material resists mild moisture, fitting bathrooms/kitchens, and works for homes, offices, or light retail—unsuitable for heavy objects or constant



- Features:**
- Install easily in pre-drilled holes
 - Coarse thread profile to cut and grip plasterboard
 - Flat-low profile head allows for flush fixing

Anchor Size(mm)
13X32

KDF-DA105
Metal Drywall Anchors

Applications:
Zinc drywall anchors are used to secure lightweight-to-medium items (e.g., small mirrors, towel bars, lightweight shelves, signage) to drywall, preventing pull-through. Their zinc material resists mild moisture, fitting bathrooms/kitchens, and works for homes, offices, or light retail—unsuitable for heavy objects or constant



- Features:**
- Install easily in pre-drilled holes
 - Coarse thread profile to cut and grip plasterboard
 - Flat-low profile head allows for flush fixing

Anchor Size(mm)
14X28

KDF-DA106
Metal Drywall Anchors

Applications:
Zinc drywall anchors are used to secure lightweight-to-medium items (e.g., small mirrors, towel bars, lightweight shelves, signage) to drywall, preventing pull-through. Their zinc material resists mild moisture, fitting bathrooms/kitchens, and works for homes, offices, or light retail—unsuitable for heavy objects or constant



- Features:**
- Install easily in pre-drilled holes
 - Coarse thread profile to cut and grip plasterboard
 - Flat-low profile head allows for flush fixing

Anchor Size(mm)
15X32

KDF-DA107

Metal Drywall Anchors

Applications:

Zinc drywall anchors are used to secure lightweight-to-medium items (e.g., small mirrors, towel bars, lightweight shelves, signage) to drywall, preventing pull-through. Their zinc material resists mild moisture, fitting bathrooms/kitchens, and works for homes, offices, or light retail—unsuitable for heavy objects or constant



Features:

- Install easily in pre-drilled holes
- Coarse thread profile to cut and grip plasterboard
- Flat-low profile head allows for flush fixing

Anchor Size(mm)

14X38

KDF-HA101

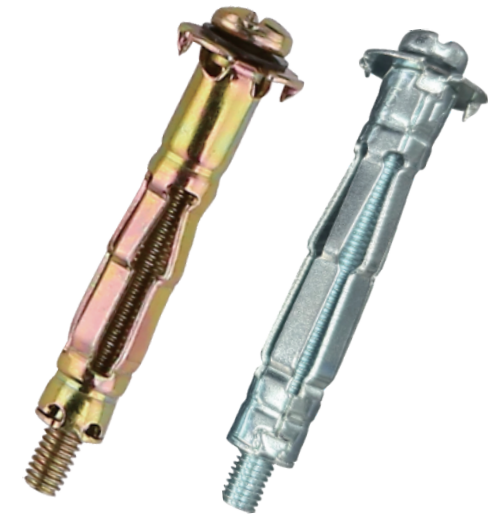
Hollow Wall Drive Anchors

Applications:

Hollow wall anchors are designed for securing lightweight-to medium items to hollow materials like drywall, hollow brick, or plasterboard (where studs aren't accessible). They distribute weight via expansion/toggle mechanisms to avoid wall damage, used in homes (hanging decor, towel bars, floating shelves), offices (whiteboards, small organizers), and retail (light displays, signage)—not for heavy objects or high-vibration/wet areas.

Features:

- Solving the problem of unstable fastening on non-solid walls
- Cavity Fixing: Plasterboard and other hollow wall materials
- Barbs: Anti-rotational spikes built onto the flange to prevent the anchor from spinning



KDF-HA102 A Type Anchors

Applications:

Plasterboard-Clip is suitable for fixing of lightweight objects in one layer plasterboard



Features:

Fast fixing due to the special tip
Economical solution
No pre-drilling

Anchor Size(mm)

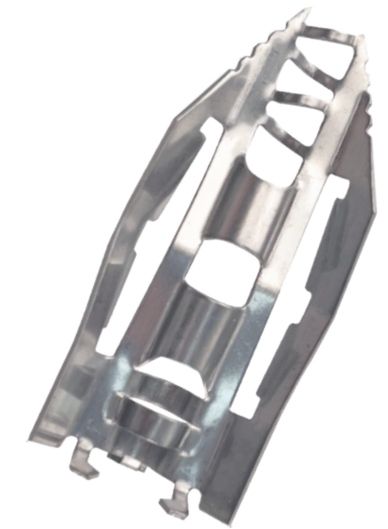
10X30

10X41

KDF-HA103 A Type Anchors

Applications:

Plasterboard-Clip is suitable for fixing of lightweight objects in one layer plasterboard



Features:

Fast fixing due to the special tip
Economical solution
No pre-drilling

KDF-HA001
Plastic Hollow Wall Toggle Anchor

Applications:

Plastic Hollow Wall Toggle Anchor with screw is for light fixing in 1 or 2 layer of plasterboard



Features:

Useable in 1 and 2 layer plasterboards
The wings of the dowel prevents rotation in the dilled hole

Anchor Size(mm)

13-19

KDF-HA002
Plastic Toggle Anchors

Applications:

Plastic Toggle Anchors is a one piece, light duty nylon cavity fastener with anti-rotation fins that prevent spinning in the hole when installing the screw. With wide wingspan technology for maximum holding power.



Features:

Wide wingspan for maximum holding power
Nylon body is non-conductive
Low-profile head allows for flush fixing
Anti-rotation fins prevent spinning in the hole when installing the screw

Anchor Size(mm)

10-13

13-16

16-20

KDF-HA003
Plastic Toggle Anchors

Applications:
Plastic Toggle Anchors are all metal, light duty, cavity fixings that use gravity and clamping force to anchor light weight fittings to plaster-board wall applications.

Features:
Non conductive nylon body
Light duty screw for plasterboard



Anchor Size(mm)
3-6
9-13
13
16-19
26-29

KDF-HA004
Plastic Toggle Anchors

Applications:
Butterfly Toggle Anchors are hollow wall anchors ideal for static applications requiring light to medium load performance. Installation is very fast. The fastener pre-installs without a screw, allowing for easy placement and removal of the fixture.
Butterfly Toggle Anchors are not recommended for use overhead or applications where holding values are critical.

Features:
Useable in 1 and 2 layer plasterboards
The wings of the dowel prevents rotation in the dilled hole



Anchor Size(mm)
10X32
10X40
10X50

KDF-HA005
Ribbled Plastic Hollow Wall Anchors

Applications:
Made of durable plastic,our plastic ribbed anchor often rugged support in light-duty situations.Because anchors are made of plastic,they are highly resistant to rust,making them perfect for use in high-humidity areas such as bathrooms.



Features:
Suitable for installing light-duty items
Weather resistance,impact resistance and tear resistance

Anchor Size(mm)	Screw Size(#)
5X22	6-8
6X25	8-10
7X25	8-10
8X30	10-12
10X36	14-16

KDF-HA006
Ribbled Plastic Hollow Wall Anchors

Applications:
Made of durable plastic,our plastic ribbed anchor often rugged support in light-duty situations.Because anchors are made of plastic,they are highly resistant to rust,making them perfect for use in high-humidity areas such as bathrooms.



Features:
Suitable for installing light-duty items
Weather resistance,impact resistance and tear resistance

Anchor Size(mm)	Screw Size(#)
5X22	6-8
6X25	8-10
7X25	8-10
8X30	10-12
10X36	14-16

KDF-HA104
Spring Toggle Anchors

Applications:

The SpringToggle is a cavity anchor with metal wings, ideal for both wall and ceiling applications. A wide wingspan gives high loading in both plasterboard wall and ceiling applications up to 10kgs.

Features:

- Wide wingspan gives high loadings in both plasterboard wall and ceiling applications
- Metal wing cavity
- Lack of a protruding flange allows for flush fixing



Anchor Size(inch)
1/8*2
3/16*2
3/16*3
3/16*4
1/4*3
1/4*4